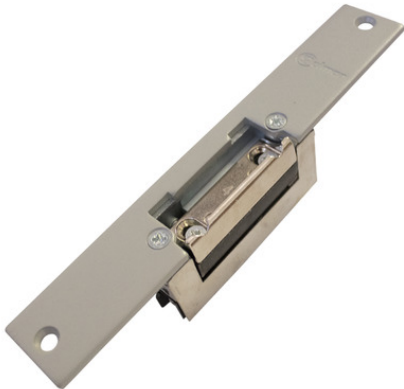


CV-14P lock release

Reference: CV-14P

Product code: 20600142

EAN code: 8429898006611



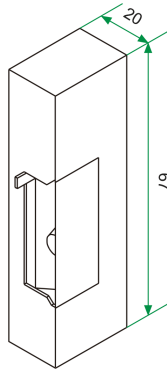
Main characteristics

- **Standard operation**, which only enables the door to be opened while the lock release push button of the apartment unit is pressed.
- **Medium size shield**.
- Casing manufactured in 2mm. thick pressure injected light alloy, with a **height of 67mm. only**.
- Adjustable bolt on all models, allowing 3 mm. precision.
- Operation voltage from 8 to **12V a.c.** (750mA consumption).

Dimensions:



Shield



Mechanism

Accessories

- SU surface shield

Visit in the website: <https://www.golmar.es/products/cv-14p>